

# TWO COATS OF PAINT

Award-winning blogazine, primarily about painting



## UNCATEGORIZED

# Elizabeth Kley and Conrad Ventur: Improbable harmony at Regina Rex

July 17, 2015 5:43 pm



Guest Contributor Jonathan Stevenson / A two-person exhibition involving a couple of clearly kindred artists stands a good chance of being demurely satisfying on account of its agreeable predictability. But one of the features that makes for a truly outstanding show is apparent incongruity that surprisingly yields integration and harmony. Lower

East Side gallery Regina Rex's current exhibition ♦♦translucent threads of dawn♦♦ the title itself is suitably enigmatic ♦♦ is a fine example.

[Image at top: Installation view at Regina Rex.]



Conrad Ventur, *MM #7*, 2010–2013, Ed.5+2AP, 40.6 cm x 61 cm. (Image is from the artist's website.)

The show brings together **Elizabeth Kley**'s ominous ceramic cages (and one bottle) of different resonances, and **Conrad Ventur**'s haunting photographs of underground movie legend and Warhol favorite **Mario Montez** (who died in 2013) in various guises and locales. What do glazed clay enclosures have to do with a flamboyant cross-dressing gay actor?

Ventur's exquisitely composed pictures recall some of Montez's performances. They are vividly colorful yet relentlessly glossy, and Montez's visage is expressive but constant. These qualities make the images seem at once extroverted and devoid of emotional differentiation. In turn, the delicateness and outward color of Kley's work belie the manifest purpose of the structures it references: to capture.

What could emerge for some viewers from this juxtaposition is that Montez (and unconventional people like him) saw the cultural mainstream as a seductive trap, and eluded and defied it with deadpan resolve. This notion broadly jibes with the gender-role farce *La Cage aux Folles* (remade as *The Birdcage*), in which a cage also figures as a metaphor. Whether or not any allusion is intended, the exhibition tweaks social and emotional nerves in its own smart, provocative, and timely way.

“**translucent threads of dawn**,” Regina Rex, LES, New York, NY. Through July 26, 2015.

— —

Two Coats of Paint is licensed under a Creative Commons Attribution – Noncommercial–No Derivative Works 3.0 United States License. For permission to use content beyond the scope of this license, permission is required.

Tags: [Jonathan Stevenson](#)

## Leave a Comment

Your email address will not be published. Required fields are marked \*

### Message

### Name

 \*

### Email Address

 \*

### Website

Save my name, email, and website in this browser for the next time I comment.

**Post Comment**



**BREAK OF DAY,  
EDGE OF NIGHT**

**JUL 19 - AUG 13**

**THE PAINTING CENTER** 547 West 27th Street,  
Suite 500, NYC

The poster features a collage of images: a man in a blue shirt on the left, a lamp on a table in the center, and a large abstract painting of a dark, textured figure on the right. The text is overlaid on the collage.



**TWO COATS  
OF PAINT  
SOCIAL MEDIA  
SERVICES**

The logo consists of the text 'TWO COATS OF PAINT' in white, 'SOCIAL MEDIA' in red, and 'SERVICES' in white, all in a bold, sans-serif font against a black background.

*Archives*

---

Select Month ▼

This block contains the word 'Archives' in a red, italicized serif font. Below it is a horizontal line, and then a dropdown menu with the text 'Select Month' and a downward-pointing chevron icon.

## Most Popular

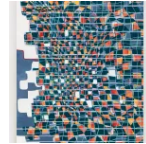
---



Dana Sherwood's wildness and domesticity

Contributed by Kari Adelaide / Dana Sherwood's exhibition "Animal Appetites and Other Encounters in Wildness,"...

---



Lisa Corinne Davis and Shirley Kaneda: Different strokes

Contributed by David Carrier / In the charming traditional galleries of the Studio School, Shirley...

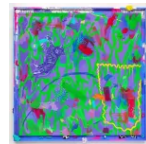
---



Bernard Goes to Chicago [Laurie Fendrich]

Spring had arrived in Chicago, but wouldn't you know it, just as people were putting...

---



Nora Griffin's defiant valentine to New York

Contributed by Zach Seeger / Nora Griffin's ostensibly playful, jangled paintings, on display at Fierman...

---



Joy Episalla's radical photography

Contributed by Adam Simon / Lately I find myself wondering what impact the ubiquity of...

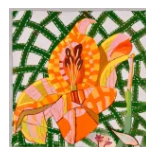
---



Arctic journal: Retreating glaciers and uncanny songs

Contributed by Frank Webster / The High Arctic has always fascinated me. Since falling in...

---



Elisabeth Condon: Beautiful complexity

Contributed by Sharon Butler  
/ To understand Elisabeth  
Condon's paintings, it seems  
important to know...

---



Two Coats Selected Gallery Guide  
NYC: July, 2022

Is summer my favorite season  
in the city? Emphatically, YES.  
A few galleries, having  
staked...

---



Two Coats Selected Gallery Guide  
to the Hudson Valley: July, 2022

Contributed by Sharon Butler  
/ It's the height of summer  
arts season in the Hudson...

---

## Contact us

---

 [Email](#)

 [Twitter](#)

 [Instagram](#)

## Get Two Coats via email

---

## Subscribe!

Email

Name

[Home](#) [About](#) [Contact](#) [Advertising](#) [Subscribe](#) [Support](#)

Copyright  2021 Two Coats of Paint / Designed by WPZOOM